




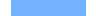

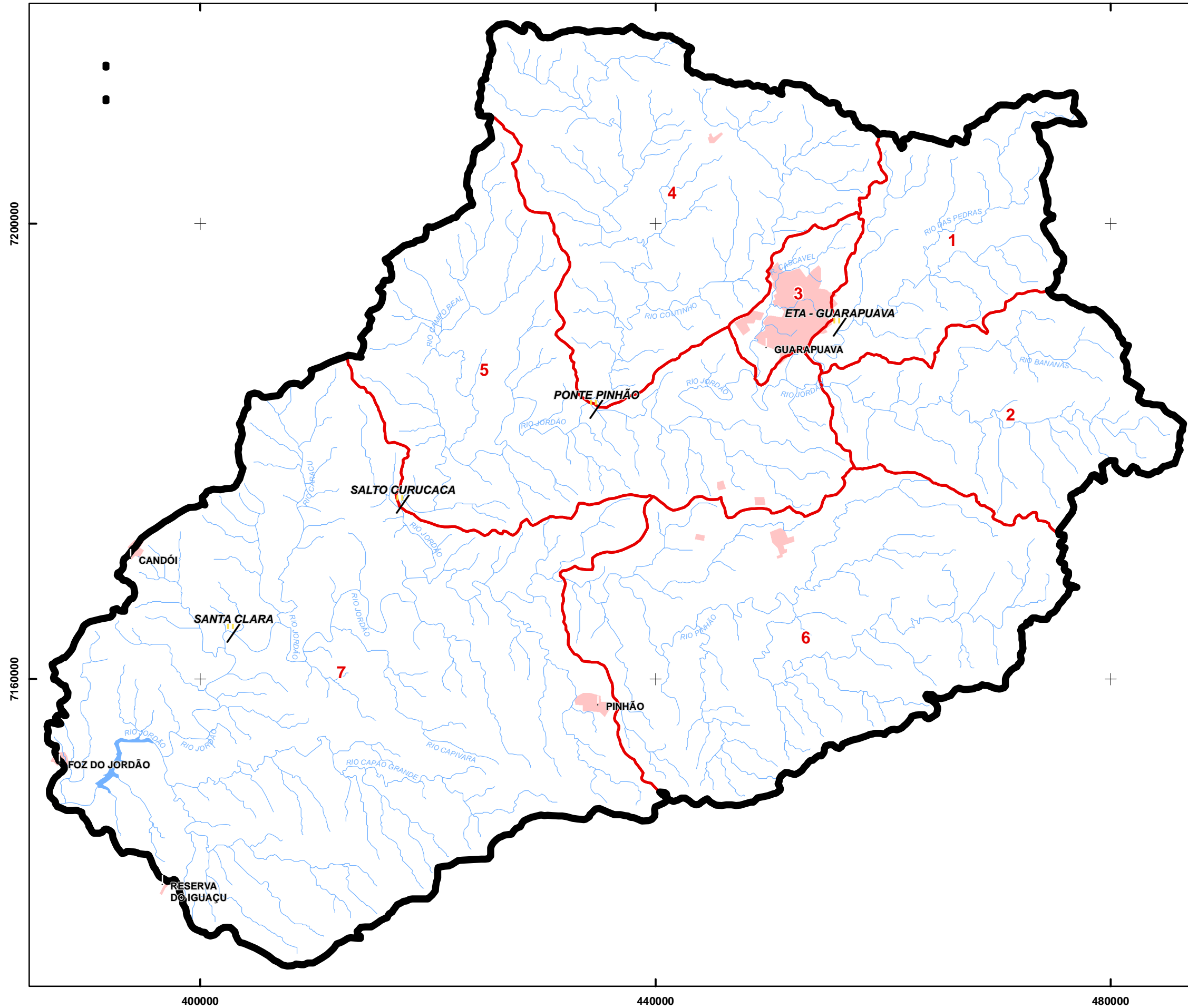


LOCALIZAÇÃO DAS ESTAÇÕES DE MONITORAMENTO DE QUALIDADE DA ÁGUA

-  ESTAÇÕES DE QUALIDADE DA ÁGUA
-  SEDES MUNICIPAIS
-  ÁREAS URBANAS
-  ÁREA DE CONTRIBUIÇÃO DAS SEÇÕES DE CONTROLE
-  HIDROGRAFIA
-  LAGOS / RESERVATÓRIOS
-  LIMITE BACIA DO RIO JORDÃO



LOCALIZAÇÃO



1:350.000
0 3.500 7.000 10.500 metros

FONTES: SUDERHSA, 2006; SEMA, 2004; SRH-MMA, Projeto Guarani 2006.
ELABORAÇÃO: ATIG/SUDERHSA, 2007.